

The threat of West Nile virus is real, and so are other viruses mosquitos carry.

Beyond mosquito repellent for protecting you and your family, PMI offers a mosquito reduction program. Our focus is the reduction of existing mosquito larvae developing in standing water and managing them before they become breeding, biting adults.

PMI offers a dual approach to reducing mosquito populations. The goal of our program is to reduce the number of mosquitoes on your property that may carry diseases such as West Nile virus, Encephalitis, Dengue, Malaria, and Canine Heartworm.

This means an ongoing treatment program is your best option to help protect you and your family, so you can continue to enjoy your outdoor activities.

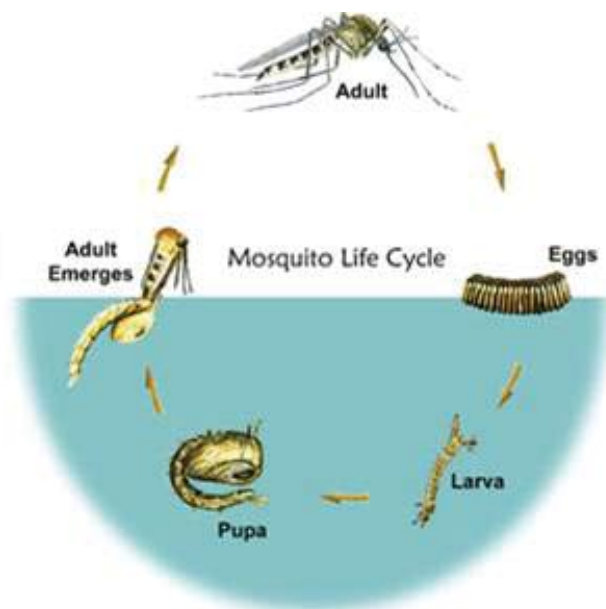


How do you know if mosquitoes are carrying a disease?

It is impossible to tell. Personal precautions such as store bought repellants are recommended. Professional management methods include two distinct control agents: adulticides, which kill adult mosquitoes, and larvicides, which prevent larval mosquitoes from becoming breeding, biting adults.

Mosquito Biology

Successful mosquito management requires a knowledge of where and how they develop. All mosquitos pass through four life stages: egg, larva, pupa, and adult. The first three stages must have water to develop. The number of days from egg to adult varies. Some mosquitos can develop from egg to adult in less than a week, or development can be extended to several months depending on species and temperature.



How do the products we use reduce mosquito populations?

We will treat the landscaping and foundations around the property with a residual adulticide to help reduce the population of mosquitos in their resting sites. When necessary, we will treat mosquito breeding sites on the property to help prevent mosquito larvae from developing into adults.

How do the products we use reduce mosquito populations?

While treatment is intended to help reduce the mosquito population on your property, our program will not totally eliminate mosquitos. PMI's Mosquito Management Program is intended to help reduce the breeding and resting sites of mosquitos around your property thus reducing, but not eliminating the opportunity of being bitten by mosquitos.



Visit our website for special promotions:

www.pestmgt.com
336-272-4400

Besides ponds and streams, where else do mosquitoes breed?

- **Over-watered landscaping**
- **Water gardens**
- **Bird baths**
- **Old tires**
- **Flower pots**
- **Tree holes**
- **Pool covers**
- **Urns**
- **Rain barrels**
- **Roof gutters**
- **Ornamental fountains**
- **Abandoned swimming pools**
- **Water troughs**
- **Retention ponds**
- **Any other water-holding receptacles, especially after rainfall**



**Locally Owned and Operated
for Over 25 Years.**



Tips for avoiding mosquito bites:

- **Stay indoors during dawn, dusk, and early evening when mosquitoes are more likely to bite.**
- **Wear light-colored clothing, plus long-sleeved shirts and long pants for extra protection.**
- **Use personal repellents on skin and clothing**
- **Protect your dog or cat with a product made especially for pets that repels mosquitoes.**

**424 Prescott Street
Greensboro, NC 27401**

**336-272-4400
www.pestmgt.com**

Mosquito Management